

InControl Tools™ 95 Help

[Click here](#) if you're unfamiliar with Windows95 Help navigation and procedures.



Getting started

[Introduction to InControl Tools 95:](#)
[Step-by-step quick start instructions.](#)



Popup menus

[How to use and modify InControl Tools 95's](#)
[dual background menu system.](#)



Hot keys

[Instantly access display features and perform tasks](#)
[by binding them to hot keys.](#)



Solutions/support

[Common questions and answers:](#)
[How to contact Diamond Multimedia Systems.](#)

Copyright © 1997 Diamond Multimedia Systems, Inc.

InControl Tools is a trademark of Diamond Multimedia Systems, Inc. All other trade names referenced in this document are the service mark, trademark, or registered trademark of their respective manufacturers.

Introduction

InControl Tools 95 provides a set of easy-access display and desktop utilities that help you maintain a picture perfect environment for work or pleasure.

The tools are available through extensions of two familiar Windows 95 features: The desktop popup menu (your "right-click" menu) and the Display Properties dialog.

With InControl Tools 95 you can:

- Set hot keys for resolution switching and most other InControl Tools 95 features.
- Control other display management features—such as your screen saver, hot key shortcuts and desktop popup menus—with menu on/off switches.
- Enable access to your Start menu from anywhere on your desktop.
- Control positioning of maximized windows, regular windows and message boxes.
- Instantly switch desktop resolutions.
- Add or remove items from your left- or right-button popup menus.
- Change your refresh rate by selecting from a list box in the new Display Properties: Refresh dialog.
- Center your screen any time using InControl Tools' unique dynamic screen positioning tool.
- Adjust your system's audio volume with a handy popup slider bar.
- Use the special Video tab on your Display Properties dialog to play and adjust video settings.

Note: This tab is available only on supported hardware configurations (machines using the Diamond Stealth 3D 2000 Pro card).

- Use the special Gamma Correction tab in your Display Properties dialog to adjust the color balance of your monitor. This feature is useful in compensating for differences between monitors, and between monitors and printers. **Note:** This tab is available only on supported hardware configurations (machines using the Diamond Stealth 3D 2000 Pro card).

- Use the special Diamond TV Out tab in your Display Properties dialog to send output to one or two connected television monitors. **Note:** This tab is available only on supported hardware configurations (machines using the Diamond Stealth 3D 2000 Pro card).

Enjoy. And don't forget to [let us know what you think.](#)

{button ,AL(^ solutions')} Related topics

Quick start instructions

When you install InControl Tools 95, a tray icon is added to your Windows95 desktop and several new options are added to your Display Properties dialog.

Many of the new features available to you are activated immediately after installing InControl Tools and restarting Windows. You can then modify or toggle any feature on or off, either through the Display Properties dialog or directly from your enhanced desktop (right button) menu.

To start using InControl Tools immediately after installation and restart:

- ▶ Click your right mouse button on the Windows desktop. Your enhanced desktop menu appears. Note that this is the same Windows95 "right-click" menu that normally appears, but with several new items listed above the standard items. These new items are your InControl Tools enhancements. Check all features and submenus to review the default settings.
- ▶ Click your left mouse button on the Windows desktop. Your popup start menu appears. Note that this is the same menu that appears when you click the Start menu. Now, however, it's also available as a "floating" popup menu.
 - Click here to open the Display Properties dialog. If you're familiar with the dialog, you'll note that it now contains new property sheets ("tabs"). The new sheets--Popup Menus, Shortcuts, Refresh and Information--are added by InControl Tools. Also note that the Settings property sheet contains advanced display area options.

You're now ready to use or customize all of these new features (such as adding hot key shortcuts).

For detailed customization instructions, click here or click the button below.

{button ,AL('howto')} How-to instructions

How to...

(Click the items below for step-by-step instructions.)

- [Enable your popup start menu...](#)
- [Disable your popup start menu...](#)
- [Enable your enhanced desktop menu...](#)
- [Disable your enhanced desktop menu...](#)
- [Assign InControl features to hot keys...](#)
- [Center your screen using the dynamic screen positioning tool](#)
- [Change your monitor refresh rate...](#)

{button ,AL('quickstart')} Quick start instructions

How to enable your popup start menu

(If the Display Properties dialog is already open, go to step 3)

- 1** Click your right mouse button anywhere on the Windows background. The Windows desktop menu appears.
- 2** Choose Properties. The Display Properties dialog appears.
- 3** Click the Popup Menus tab.
- 4** Click the Start Menu check box. An "X" appears in the box.
- 5** If you're finished making changes, click Apply, then OK to close the Display Properties dialog. If you want to make other changes, click the button below for a list of other instruction sets.

{button ,AL(`howto')} Other how-to instructions

How to disable your popup start menu

(If the Display Properties dialog is already open, go to step 3)

- 1** Click your right mouse button anywhere on the Windows background. The Windows desktop menu appears.
- 2** Choose Properties. The Display Properties dialog appears.
- 3** Click the Popup Menus tab.
- 4** Click the Start Menu check box to clear it.
- 5** If you're finished making changes, click Apply, then OK to close the Display Properties dialog. If you want to make other changes, click the button below for a list of other instruction sets.

{button ,AL(`howto`)} Other how-to instructions

How to enable your enhanced desktop menu

(If the Display Properties dialog is already open, go to step 3)

- 1** Click your right mouse button anywhere on the Windows background. The Windows desktop menu appears.
- 2** Choose Properties. The Display Properties dialog appears.
- 3** Click the Popup Menus tab.
- 4** Click the Enable Customized Popup Menu check box. An "X" appears in the box.
- 5** Choose an item from the Available Menu Items list.
- 6** Click Add to add the item to your Windows popup menu.
- 7** Repeat the previous two steps for all other features you want to add to your popup menu.
- 8** If you're finished making changes, click Apply, then OK to close the Display Properties dialog. If you want to make other changes, click the button below for a list of other instruction sets.

{button ,AL(^ howto')} Other how-to instructions

How to disable your enhanced desktop menu

(If the Display Properties dialog is already open, go to step 3)

- 1** Click your right mouse button anywhere on the Windows background. The Windows desktop menu appears.
- 2** Choose Properties. The Display Properties dialog appears.
- 3** Click the Popup Menus tab.
- 4** Click the Enable Customized Popup Menu check box to clear it.
- 5** Choose an item from the Available Menu Items list.
- 6** Click Add to add the item to your Windows popup menu.
- 7** Repeat the previous two steps for all other features you want to add to your popup menu.
- 8** If you're finished making changes, click Apply, then OK to close the Display Properties dialog. If you want to make other changes, click the button below for a list of other instruction sets.

{button ,AL(^ howto')} Other how-to instructions

How to assign InControl features to hot keys

(If the Display Properties dialog is already open, go to step 3)

- 1** Click your right mouse button anywhere on the Windows background. The Windows desktop menu appears.
- 2** Choose Properties. The Display Properties dialog appears.
- 3** Click the Shortcuts tab.
- 4** Click the arrow on the Shortcut action box to see a dropdown list of available InControl features.
- 5** Click the name of the feature you want to assign to a hot key.
- 6** Click the Shortcut key box (so that the cursor appears in it).
- 7** Press the key or key combination you want to use to activate the feature. For example, if you want the feature to be activated whenever you press the Ctrl, Alt and X keys at the same time, press all of those keys now. When you do, the combination appears in the Shortcut key box. At the same time, the binding, or assignment, appears in the Shortcut bindings list above.
Add any other assignments now. If you change your mind on any of them, just select the binding you want to remove from the Shortcut bindings list, then click Remove binding.
- 8** If you're finished making changes, click Apply, then OK to close the Display Properties dialog. If you want to make other changes, click the button below for a list of other instruction sets.

{button ,AL(`howto`)} Other how-to instructions

About InControl Tools' popup menus

While InControl Tools is running with its popup menu features enabled, menus appear whenever you click your left or right mouse buttons on the Windows background.

Th	The
e	enh
st	anc
art	ed
me	des
nu	kto
ap	p
pe	me
ars	nu
wh	app
en	ears
yo	wh
u	n
cl	you
ic	click
k	your
yo	right
ur	t
lef	mou
t	se
mo	butt
us	on.
e	
but	
ton	
.	

{button ,AL(' howto;popups')} Related topics

The popup start menu

The popup start menu is an InControl Tools option that lets you open a menu when you click your left mouse button on the Windows background. It's the same menu you see when you click the Start button on the Windows95 taskbar.

The menu is enabled when InControl Tools is installed. After installation it can be switched off and on any time.

For start menu access and customization instructions, [click here](#).

To toggle the popup start menu on or off:

- Open the enhanced desktop menu by clicking your right mouse button on the Windows background, then choose Start menu.

or

- Click the Start menu check box in the Display Properties dialog. If the box is checked, the menu is on; if cleared, the menu is off. Be sure to click Apply or OK before closing the dialog.

Note: Even if you currently have the popup start menu switched on, it is automatically turned off if you close the InControl Tools tray icon. It is restored to its previous state when you run the InControl Tools Video Applet or restart Windows.

{button ,AL(^ popups;hotkeys;solutions')} Related topics

The enhanced desktop menu

The enhanced desktop menu is an InControl Tools option that adds a number of items to Windows' built-in "right-click menu." This menu normally appears when you click your right mouse button on the Windows [background](#).

For enhanced desktop menu customization instructions, [click here](#).

For descriptions of menu items, [click here](#).

The menu is enabled when InControl Tools is installed. After installation it can be switched off and on any time.

To toggle the enhanced desktop menu on or off:

- Open the enhanced desktop menu by clicking your right mouse button on the Windows [background](#), then choose Popup Menu.

or

- Click the Right Mouse Button Popup menu check box in the [Display Properties dialog](#). If the box is checked, the menu is on; if cleared, the menu is off. Be sure to click Apply or OK before closing the dialog.

Note: Even if you currently have the enhanced desktop menu switched on, it is automatically turned off if you close the InControl Tools [tray icon](#). It is restored to its previous state when you run the InControl Tools Video Applet or restart Windows.

{button ,AL(' popups;hotkeys;solutions')} Related topics

About hot keys

InControl hot keys let you assign key combinations to tasks in Windows95. You can then press these combinations any time from anywhere in Windows to open programs, open documents, or perform InControl display management tasks.

No hot keys are assigned when InControl Tools is installed. For step-by-step instructions in assigning hot keys, [click here](#).

{button ,AL(^ howto')} Related topics

How to center your screen using the dynamic screen positioning tool

(If the [Display Properties dialog](#) is already open, go to step 3)

- 1 Click your right mouse button anywhere on the Windows [background](#). The Windows desktop menu appears.
- 2 Choose Properties. The Display Properties dialog appears.
- 3 Click the Refresh tab.
- 4 Move your mouse cursor to the screen area on the monitor graphic. The mouse cursor changes to a hand.
- 5 Press and hold your left mouse button and move the screen graphic up, down, or to either side. Note that your screen is repositioned dynamically as you move the mouse.
- 6 Release your mouse button when your screen is centered.
NOTE: You can also change the screen position dynamically by simultaneously pressing your Alt key and any of the directional arrow keys.
- 7 A confirmation message opens to let you verify the change. Click Yes to confirm the change, or No to revert to the previous screen position. If you don't make a choice, the message box is dismissed after a few seconds and the screen reverts to its previous position.

{button ,AL(^'howto')} Related topics

How to change your monitor refresh rate

(If the [Display Properties dialog](#) is already open, go to step 3)

- 1** Click your right mouse button anywhere on the Windows [background](#). The Windows desktop menu appears.
- 2** Choose Properties. The Display Properties dialog appears.
- 3** Click the Refresh tab.
- 4** In the lower portion of the dialog, open the Refresh dropdown list by clicking on the downward-pointing arrow on the list viewer. The list contains all available refresh rates for the currently selected monitor type and color palette.
- 5** Select a new refresh rate. A confirmation message box opens.
- 6** If the new refresh rate appears stable, you can click Yes to confirm the selection. If you click No or wait a few seconds, the previous refresh rate is restored.

{button ,AL('howto')} Related topics

Solutions

After installing InControl Tools and Windows restarts, Windows tells me that I should run a check for new hardware. But I didn't change my hardware, so why does it ask?

InControl Tools installs a new Windows95 display driver. In most cases, the new driver is part of a new display card installation package. In either case, Windows senses a change in the display environment, and asks you if you want to check for new hardware.

If you did install a new card when you installed InControl Tools, you should follow the hardware-check procedure when the query appears. If you only installed or reinstalled the InControl Tools software, you don't have to do the hardware check.

Note: If you had a higher resolution display setup before installing the software, you will probably want to restore your screen to its previous settings when Windows restarts (it restarts to the default VGA 640 X 480, 16-color state). To do that, open go to your Control Panel window, click on the Display applet to open the [Display Properties dialog](#), choose the Settings tab, and make your selections.

I changed display cards, installed the new driver for the new card, and now InControl Tools doesn't work. Why?

InControl Tools works only with certain Windows95-compatible Diamond drivers. If you install an unsupported driver, your Display Properties dialog in Control Panel reverts to its default state and all InControl Tools features are removed.

{button ,AL(' quickstart;howto;popups;hotkeys;contacts')} Related topics

How to contact us

We'd like to hear what you think about InControl Tools. Pass along any comments or suggestions to our main office or through any of the online services listed below. You can also contact us for sales support, technical assistance, driver updates and general information.

Main phone number: 408-325-7000
Fax: 408-325-7070
Product support: 408-325-7100
24-Hour Fax On Demand service: 1-800-380-0030
America Online keyword: DIAMOND
CompuServe: GO DIAMOND
Microsoft Network: Find DIAMOND
Web site: <http://www.diamondmm.com>
FTP site: <ftp.diamondmm.com>
Diamond product information: 1-800-468-5846
BBS: 408-325-7080 (to 14.4 baud)
or 408-325-7175 (to 28.8 baud)

{button ,AL(`solutions`)} Related topics

Click this to add a program to the start menu (left button menu).

Click this to remove a program from your popup start menu (left button menu).

This button opens Windows Explorer to allow you to perform further modifications on your popup start menu (left button menu).

Check this box to enable the Add, Remove and Advanced buttons. These buttons open windows that let you customize your popup start menu (left button menu).

The controls in this group let you customize your enhanced desktop menu (right-button menu). First check the Start Menu checkbox to enable the buttons, then Add or Remove programs from your menu. The Advanced button lets you use Windows Explorer to customize your menu.

The controls in this group let you customize your popup start menu (left button menu). First, check the Customize checkbox to enable the listboxes, then click the buttons below them to Add or Remove the menu items you select.

Check this box to enable the listboxes and buttons below. These buttons and boxes let you add or remove items from your popup start menu (left button menu).

A list of the items you can add to your enhanced desktop your enhanced desktop menu (right-button menu). Items with a plus [+] sign have additional items. To see them, double-click the item. To see more of the list, use the scroll bars. To add an item, an item from a group or an entire item group to the menu, select the item, then click the Add button.

A list of the items you can remove from your enhanced desktop menu (right-button menu). Items with a plus [+] sign have additional items. To see them, double-click the item. If the list extends beyond the box, use the scroll bars to see more of it. To remove an item, an item from a group or an entire item group from the menu, select the item, then click the Remove button.

Click this button to add items to your enhanced desktop menu (right-button menu). Use the Available Menu Items listbox to select the items you want to add.

Click this button to remove items from your enhanced desktop menu (right-button menu). Use the Current Menu Items listbox to select items for removal.

A list of all current shortcut key assignments. To remove an assigned shortcut, select it, then click the Remove Binding button at the bottom of the property sheet. If the list extends beyond the box, use the scroll bar to see more of it.

A dropdown listbox containing all available actions that can be assigned to shortcut keys. Click the arrow to open the box, then use the scroll bar to scan the list and select an action you want to bind to a shortcut. To assign a shortcut to the selected action, place your cursor in the Shortcut Key window, press a key or key combination, then click the Add Binding button. The new shortcut assignment appears in the Shortcut Bindings list above.

Icon representing the currently selected action.

This is where you bind a shortcut to the action displayed in the Shortcut Action window. To create the binding, place your cursor in this window and press any key or key combination. When you click the Add Binding button, the new shortcut assignment appears in the Shortcut Bindings list at the top of the property sheet.

Click this button to bind the action shown in the Shortcut Action window to the key or key combination shown in the Shortcut Key window. The new assignment appears in the Shortcut Bindings list at the top of the property sheet.

Click this button to remove a shortcut key assignment. Use the Shortcut Bindings list at the top of the property sheet to select the assignment you want to remove.

A list of all current shortcut key assignments. To remove an assigned shortcut, select it, then click the Remove Binding button at the bottom of the property sheet. If the list extends beyond the box, use the scroll bar to see more of it.

A dropdown listbox containing all available actions that can be assigned to shortcut keys. Click the arrow to open the box, then use the scroll bar to scan the list and select an action you want to bind to a shortcut. To assign a shortcut to the selected action, place your cursor in the Shortcut Key window, press a key or key combination, then click the Add Binding button. The new shortcut assignment appears in the Shortcut Bindings list above.

This is where you bind a shortcut to the action displayed in the Shortcut Action window. To create the binding, place your cursor in this window and press any key or key combination. When you click the Add Binding button, the new shortcut assignment appears in the Shortcut Bindings list at the top of the property sheet.

Shows how the current settings will look on your screen.

Increases or decreases the number of pixels—vertically and horizontally—used to create the picture on your monitor. Higher resolutions allow you to display more objects and in finer detail. Your monitor and display adapter determine whether you can change this setting.

Click this to install the software for a new display adapter or monitor.

Check this box to allow Diamond's video drivers to work faster by bridging a portion of the Windows 95 graphics subsystem. **Note:** GDI acceleration may cause problems with certain games or other Windows applications. If you detect such problems, return to the Settings page and clear the GDI Acceleration checkbox.

Fast Texture Filtering improves 3D performance by about 30% while changing texture quality slightly. This option only improves 3D performance on applications which use bilinear texture filtering. (Bilinear texture filtering is sometimes called smoothing in some applications such as Microsoft's Monster Truck Madness.) Any open 3D applications must be restarted before the option takes effect. **Note:** This feature is hardware specific and is not available to all system configurations.

Click this button to remove a shortcut key assignment. Use the Shortcut Bindings list at the top of the property sheet to select the assignment you want to remove.

Changes the size of the text that Windows displays. If this setting is unavailable, you cannot change the font size.

Lists the color palettes that your display adapter and monitor support.

When you move your cursor over the "screen" portion of this graphic, the cursor changes to a hand. When it does, left-click and drag the screen up, down, left or right to dynamically center your picture.

Click this button to restore your monitor to its default centering position.

Choose a refresh rate from this list of all available refresh rates for the currently selected monitor and color palette.

Use this listbox to select the media clip you want to play in the video window.

Clear this checkbox to disable vertical filtering of the video playback. To turn vertical filtering back on, check the box again. The feature is enabled by default.

Click this button to restore all Color settings (the brightness, contrast, saturation and hue sliders) to their default positions.

Click this button to launch the Windows Media Player application.

Opens InControl Tools 95 Help.

Displays the current status of the Diamond video overlay driver.

The video playback window. Click the Play button to start the video. To move to another position in a running video, move the slider left or right.

Move this slider to adjust the brightness of the currently selected video.

Move this slider to adjust the contrast of the currently selected video.

Move this slider to adjust the color saturation of the currently selected video.

Move this slider to adjust the color hue of the currently selected video.

The test pattern area of the dialog lets you see the effect of your custom color correction settings on a variety of test patterns. To choose a new pattern, select it from the listbox.

The color space area of the dialog lets you choose the color space—either RGB (red/green/blue) or CMY (cyan/magenta/yellow)—that is used when color controls are manipulated. It also displays a graph of the color components in the color table.

The color controls area of the dialog contains the sliders that let you modify your monitor's color table. Here you can adjust the overall brightness, contrast, and gamma. Note that the gamma slider allows adjustment of the color table from a standard linear ramp, though the actual physical characteristics of a monitor are not linear. To choose a color component for modification, click one of the color buttons below the sliders. To reset the settings to their defaults, click the Reset button.

This area of the dialog lets you save current custom settings and return to them any time by selecting a Scheme name from the dropdown listbox. To save a custom scheme, make your adjustments, click Save As, then name the scheme. The new scheme then appears in the listbox. To delete a saved scheme, select it on the list, then click Delete.

Click this checkbox to disable all custom gamma correction adjustments and return the monitor to its default color table. To return to the current custom settings, clear the checkbox.

Master on/off switch. The TV page's master on/off button lets you enable or disable TV output when a television monitor is connected. When you click it On your monitor receives TV output and only TV-compatible modes are present through the settings page or InControl Tools. When clicked Off, your monitor switches back to normal VGA output. If a television monitor is not connected, the controls on the TV page--including the on/off switch, are automatically disabled.

Test pattern. This area of the TV page displays the currently selected test pattern. You can switch test patterns using the dropdown listbox to the right. The patterns show the effects on the TV output quality as you make modifications using the other controls on the page.

Test pattern list. This dropdown list of test patterns on the TV page lets you select from among samples that help you adjust TV output quality for color balance, character sizing, and single-pixel vertical and horizontal adjustments. The pattern you select here is displayed in the window to the left. Available only when a television monitor is connected and TV output controls are switched on.

Brightness. This TV page slider lets you adjust the brightness setting on your TV output. Works only when a television monitor is connected and TV output controls are switched on.

Fine tuning. This TV page slider lets you fine tune your TV output. Works only when a television monitor is connected and TV output controls are switched on.

Port selection options. If you have television monitors connected to both Composite and SVideo ports, these TV page option buttons let you switch between them to make adjustments to TV output controls. If a TV monitor is connected to only one port, only that port type is active. If a TV monitor is not connected or the TV output switch is turned off, both port types are grayed out.

Sharpness. This TV control lets you choose between Low and High sharpness for your TV image. Works only when a television monitor is connected and TV output is switched on.

Centering controls. Use this TV page button cluster to shift your TV picture left, right, up or down. Each click moves the picture four pixels. Works only when a television monitor is connected and TV output is switched on.

Overscan options. These two TV option buttons let you select between two modes of TV image coverage. Overscan lets the picture flow beyond the physical boundaries of your screen, which truncates small portions of the image on all sides. If you choose Overscan, however, you can make further adjustments to the image using the Overscan Filter options. Underscan reduces the overall height and width of the TV image on your screen. Both options are unavailable if a TV monitor is not connected or TV output is turned off.

Overscan filter. This TV option lets you adjust the amount of overscanning, which is the extent to which the TV image flows to and beyond the edges of your screen. To make this adjustment, you must select the Overscan option (available only if a TV monitor is connected and TV output is turned on).

xxx. xxx

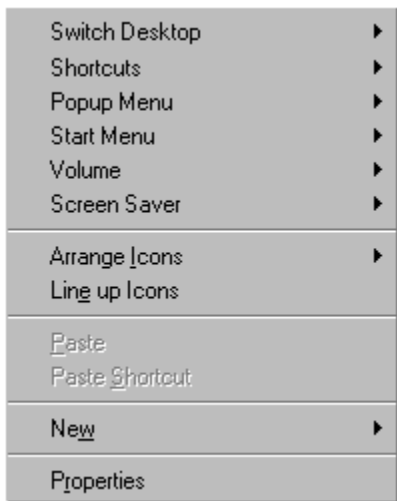


Actions. A dropdown list of InControl Tools functions that you can assign to the current key or mouse combination in the Hot Keys ToolPanel. Actions include on-the-fly resolution switching, on/off switches for dynamic features, access to InControl's Popup Menu, and the launching of other Windows programs. After choosing an Action, you can bind it to the current key/mouse combination by clicking the Add Hot Key button.

Bindings. List of all current Hot Key assignments. You can use these assignments to perform the listed tasks from anywhere in Windows as long as InControl Tools is active.

Popup start menu. An InControl Tools option that lets you open a menu when you click your left mouse button on the Windows background. It's the same menu you see when you click the Start button on your Windows taskbar. For instructions on customizing your start menu, [click here](#). To find out how to switch the "popup" version on and off, [click here](#).

Enhanced desktop menu. An InControl Tools option that adds a number of items to Windows' built-in "right-click menu." When enabled, the menu appears when you click your right mouse button on the Windows background. To see the menu with all options listed in their default state, [click here](#). For instructions on customizing your enhanced desktop menu, [click here](#). To find out how to switch the menu on and off, [click here](#).



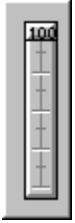
Switch Desktop. Switch to a different desktop size.

Shortcuts. Use this menu item to switch your hot key assignments on or off.

Popup Menu. This item lets you switch your enhanced desktop menu (this menu) on or off. When off, only the default Windows95 desktop menu appears when you click you right mouse button on the Windows background. To reactivate the enhanced menu, click the InControl Tools tray icon and choose Enable Popup.

Start Menu. This item lets you switch the popup start menu on or off. When off, you can still access the start menu in the normal manner (from the Start button).

Volume. Controls your system audio level. Use your left mouse button to drag the button on the slider up or down to increase or decrease volume. As you move it, the relative volume level is displayed on the button.



Screen Saver. If you have a screen saver active, InControl Tools lets you switch it on or off without returning to the Display Properties dialog. ▪ How: Choose Screen Saver from the InControl Tools enhanced desktop menu, then choose On or Off from the submenu.

Arrange Icons. Contains commands for arranging icons on your desktop.

Line up Icons. Arranges icons in a grid.

Paste. Creates a desktop icon you that can be used to access the current contents of the clipboard.

Paste Shortcut. Creates a shortcut desktop icon that can be used to access the current contents of the clipboard.

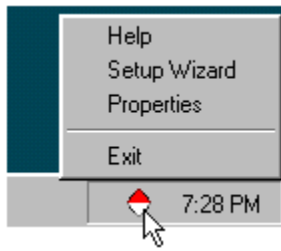
New. Group of Windows commands that let you open new documents of certain types or create new folders or shortcuts on the desktop.

Properties. Opens the Display Properties dialog, the Control Panel dialog box that lets you see and modify your current display settings. InControl Tools adds property sheets and options to the default Windows95 Display dialog.

To see the dialog now, click this button: ▀

Background. The "wallpaper" area of your desktop on which windows and icons appear. To click on the background, click on any area that is not within a window, icon or icon label.

Tray icon. The InControl Tools icon that appears in the tray on the right side of your Windows95 taskbar (or on the bottom of the taskbar, if you position it vertically). When you click the icon with your left mouse button, a menu appears to let you exit InControl Tools, open this Help file, or open the Display Properties dialog box.



GDI Acceleration. A special driver enhancement that allows Diamond's video drivers to work faster by bridging a portion of the Windows 95 graphics subsystem. **Note:** GDI acceleration may cause problems with certain games or other Windows applications. If you detect such problems, return to the Display Properties: Settings page and clear the GDI Acceleration checkbox.

